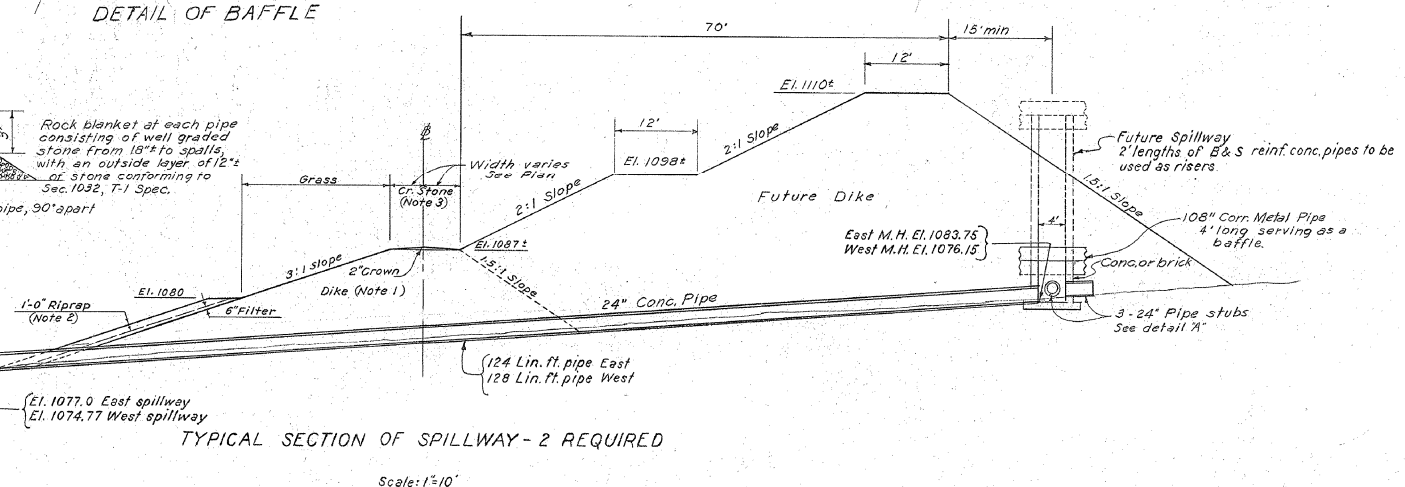
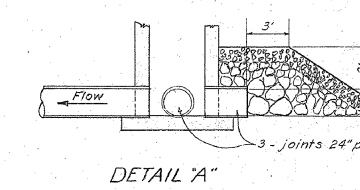
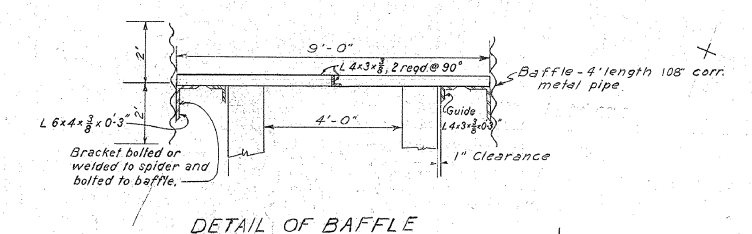


B-B & B1-B1  
B-B as shown  
B1-B1 similar  
Scale 1"=20'

**APPROXIMATE QUANTITIES**  
 Dike Embankment 65,000 C.Y.  
 Riprap 3,300 C.Y.  
 Filter 1,650 C.Y.  
 Surfacing (4" crushed stone) 520 C.Y.



- NOTES:**
- DIKE to be constructed with unclassified excavation.
  - RIPRAP to consist of durable stone; 50% to weigh at least 100 lbs.
  - SURFACING: Crushed stone 4" thick to be applied for the full width of the dike in accordance with section 210 of the T-1 specs.
  - GRASSING and fertilizer: sect. 130, T-1 specs. except if seeded in fall use 15 lbs. Ky 31, 5 lbs. Alsike clover and 15 lbs. perennial rye per acre. If seeded in spring use 30 lbs. sericea per acre. Apply light mulch as per sect. 161A.

Scale: 1"=200' Except as noted

MAIN PLANT		
ASH DISPOSAL AREA		
JOHN SEVIER STEAM PLANT TENNESSEE VALLEY AUTHORITY DIVISION OF DESIGN		
SUBMITTED <i>H. N. Colwell</i>	RECOMMENDED <i>A. A. Meyer</i>	APPROVED <i>R. A. Marshall</i>
KNOXVILLE	4-30-53	41 C 4
RECORD DRAWING AS CONSTRUCTED 1-24-56		

For At Constructed Location of Dike  
Book 903-2 Page 16 thru 21

3 12258	100	100	100	100	100
DESIGN	DATE	MADE	CHKD	SUPV.	INSP.
DRWN	DATE	MADE	CHKD	SUPV.	INSP.
CHKD	DATE	MADE	CHKD	SUPV.	INSP.
TRCD	DATE	MADE	CHKD	SUPV.	INSP.
CONC	DATE	MADE	CHKD	SUPV.	INSP.